

TE REO



TE PIHINGA

MAI I TE 13 KI TE 18 MARAMA

PUKAPUKA
TORU





TE PIHINGA

13 MARAMA – 18 MARAMA

TE ŪPOKO 1:

MAI I TE 13 KI TE 15 MARAMA

TE ŪPOKO 2:

MAI I TE 16 KI TE 18 MARAMA

Whakatipu he rauemi tēnei hei tautoko whānau ki te whakatipu tamariki mai i te wā ka hapū te whāea, ka whānau mai te pēpi tipu noa ki te rima tau te pakeke. Kei roto nei ngā kōrero mōhiotanga, ngā ngohe me ngā akoranga ā tikanga mā ngā mātua katoa.

Ko **Te Pihinga** me ōna wāhanga e whai ana i te wā ka whānau mai te pēpi tae noa ki te 18 marama te pakeke. Koinei te wāhanga whakamutunga o **Te Pihinga**.

Mēnā koe e hiahia mōhiotanga atu anō haere ki *Whakatipu* i www.skip.org.nz

TE PIHINGA

MAI I

TE TEKAU MĀ TORU

KI TE TEKAU MĀ RIMA

MARAMA

He taonga te tamaiti.

A child is a precious treasure.

E Aha Ana...

Tā Pēpi:

Kei te kaha puta ake aku
whakaaro, ka harikoa ana
ahau he pai ki au te awahi,
te kihi i taku whānau.

Ka hōhā ana ahau kua noho
au ki te patu, ki te rapirapi, ki
te auē, ki te whakakuene.

Kua kaha nekeneke ahau,
kua ngōki, kua tū ahau, kua
hīkoi haere me te pupuri i
tētahi mea, ngā taputapu
pea, tāngata rānei.

Kua hīkoi rānei au ko
au anake.

He pai ki au te kuhukuhu, te
hurihuri haere i ngā taputapu.
Pēnei i te ngōki i raro i ngā
tēpu, ngā tūru, te kuhu ki roto
pouaka, ahakoa kei hea
he putanga.

He rawe ki au te
whāngai i au anō.
Titiro mai!



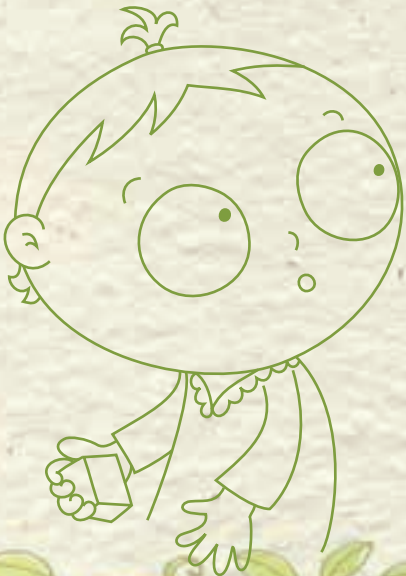
Tā Pēpi:

Kua tino toa rawa atu ahau ki te kohikohi mea moroiti mā taku kōnui me taku kōroa, pērā anō te kai, taputapu pakupaku, he miro, wūru, kōhatu. Āe rite tonu au ki te mihini ngote paru!

Kua tīmata au ki te mōhio me te whakautu ki ētahi kupu āhua rahi nei. Me taku kōrero anō hoki i ētahi kupu hou.

Ka hiahia mea ana ahau kua tohu au kia mōhio ai taku whānau i aku hiahia, ā, ka titiro mai rātou ki au ka whiriwhiri he aha taku hiahia.

Ko ngā kōrero ā ētahi, ngā kupu ka rongu au, ka tāruahia e au. Nō reira kia tūpato! Rite tonu au ki te rorohiko!



Tā Te Whānau:

Kua mārama haere, kua manaaki haere mātou
i tana wairua hihiko, ā, kua whakarite mātou i
ana hiahia.

He pai tonu te whakawarea i ā ia ēngari
me tere!

Kua whakawātea mātou i ētahi wāhi mōna kia
pai ai tana kukume i ā ia ki runga ka tū, hei
āwhina i ā ia ki te hīkoi haere me te pupuri.

Ka mataara katoa mātou i ngā wāhi, i ngā mea
mōrearea i roto, i waho i tō mātou kāinga kei
tūpono whara ā pēpi.



Tā Te Whānau:

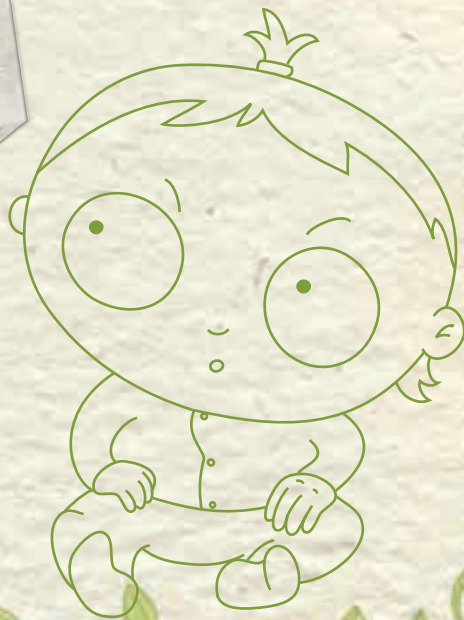
Kua tīmata tā mātou whāngai i ā ia i ngā kai paku, moroiti nei. He pai ki ā ia te whāngai i ā ia anō.

He pai ki ā ia te whakamahi i ana nekeneke hou ō te tinana, hoki atu hoki atu te mahi, kāore e hōhā!

Ahakoā he aha tāna ka kite, ka ingoatia e mātou me te aha he rahi ake ngā kupu mōhio ā ia, i ngā kupu ka tāea e ia te kōrero.

He aha rā ngā whakaaro ō pēpi?

Ko tēhea wāhi ō 'ba ma da ba' tā rātou e kore nei e mōhio?



Kaitiaki Pēpi

Te Whakawhiwhi Taonga

Whakawhiwhia ai ētahi whānau i te taonga nui motuhake mō te tamaiti. Ko ngā taonga hei paihere i ngā whānau whānui, i ngā hapū me te hunga hoki homai koha ki te pēpi.

Ētahi taonga pounamu pēnei i te kapeu, i te manaia, i te tiki rānei ka hoatu ki te whānau ka nihoniho ana ā pēpi. Ko ēnei momo pounamu he nunui katoa nō reira kāore e rāoa, e aituāhia e pēpi. He pai anō hoki te pounamu mō te pēpi nihoniho, he mārō, he mātao, he rawe hei pēhi i ngā paepae niho ka pupuhi ana, ā, mō te whakaputa mai o ngā niho.

E ai ki ngā kōrero he tino taonga te tiki hei atawhai i te kaimau, hei whakaū hoki i te mārama o te whakaāro, te hōhonu o te mātauranga ki ā ia. Ko te tiki te tohu o te tangata tuatahi ā ngā atua.

He tohu anō hoki mō te mana o te hua o te whānau tamariki, koirā ka rite tōna āhua ki te kōhungahunga kei te whare tangata o tōna whāea. Ko ōna ringa kei ngā kūhā, te tohu o te hua o te tangata me te ora o te tangata.



Ko te tohu o te koru i ōrokohanga mai i te punga, he rākau Māori nō Aotearoa nei, ā, ko te tohu nei mō te pihinga mai i te tipuranga hou, te tipu motuhake o tēnā, o tēnā, ngā kōhuritanga, ngā ohoohotanga. Tāpiri atu hoki ki ēnei ko te āio, te mauru, nō reira he koha tino nui tēnei mā tētahi matua hou, tētahi tamaiti hou, mā tētahi rānei e hīkoi ana i tana ara hou.

Ākuanei koinei te wā ki te whakawhiwhi i ā pēpi i tōna anō taonga ki te whakaātu rānei i tētahi pounamu nō te whānau.



Te Hinengaro Miharo

He aha ngā mea kei te whāngaihia ki te hinengaro o pēpi ka hopukina e ia ka mau i roto i ana roro. Mēnā ka whāngaihia ā ia i ngā whakaāro, i ngā mahi papai ka pai rawa atu mōna i ā ia e tipu haere ana.

Ko te akoranga tino whakahirihiko i te roro ko ērā mea e kite ana ia, e rongono ana, e pā ana, i te wā kotahi. Kei te hurihuri ngā roro me te tūhonohono anō ka aha ētahi tāngata i ana mahi.

Kei te hiahia mōhio koe i ētahi o ngā mahi mīharo ā ngā roro? E huri ki *Whakatipu*
www.skip.org.nz

Waiata Kōhungahunga

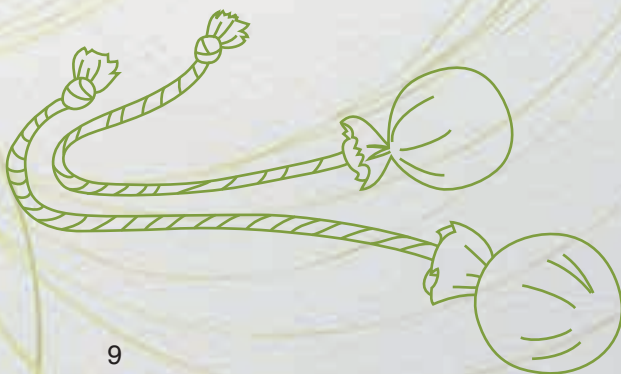
Kua kaha te aro atu ō pepi i ētahi atu me ā rātou mahi. Ka pārekareka ki ā ia te mātakitaki i ā rātou, ka whaiwhai i ā rātou mahi pēnei rawa i te waiata-ā-ringa, te poi, te haka.

**Tō ringa ki roto, tō ringa
ki waho,
tō ringa ki roto, ka ruiruihia
Kei te hope hope au,
kei te hurihuri au
Kei te pakipaki au e!**

**Whakamahia ngā kupu nei –
Waewae, Māhunga, Tinana,
Ringa.**

He tino pai ki ā pepi te tāruarua anō ō ngā waiata mōhio ia. Ko te mea pai kāore ā ia e aro atu mēnā he pai koe ki te waiata, he papatahi rānei!

Ki te hiahia whakarongo ki tēnei waiata, i ētahi atu waiata anō, e huri ki *Whakatipu* www.skip.org.nz



Ngā Mahi a Pēpi

Tukuna ā pēpi i tāna e hiahia ana ka pānui pukapuka ana kōrua. Tērā pea:

- Ka pirangi ia kia hoki atu, hoki atu te pānui i te pukapuka kotahi
- Ka hiahia i tētahi pukapuka ka hoatu ai ki ā koe hei pānui ki ā ia

Ako kupu Māori hou! Tuhia ki runga papa piripiri ka waiho i ngā wāhi e kite katoa ai te whānau, kia maumahara ai te katoa ki te whakamahi i aua kupu ia te wā.

- Moenga – cot
- Kākahu – clothes
- Tūru – chair

Te ngohe 'Pōhi' - he pai hei āwhina i ā pēpi ki te whakapakari i ngā whakanekeneke mai i te ringa ki te karu, te āta whakaaro me te whakatika raruraru. Tēnā mahia:

- Tīkina he ipu miraka kore he aha i roto me ētahi pinepine, ngā mea kāore e kini i ā pēpi, hei pōhi ki rō ipu. He ngohe tino ngahau tēnei hei whakahihiko i ngā roro.

Ka pirangi ngohe anō koe, e huri ki
Whakatipu
www.skip.org.nz



Te noho mārie me ā tātou tamariki

Tēnā koa...

Whakararururuhia
ō mahara –
me waiata, me tatau,
me pekepeke.

Te tere kite i ngā
tohu e raruraru ana.

Whakawātea i ā koe
anō mēnā koe kei te
riri. Kia tau ō mahara
ka hoki mai.

Āta hēhē kia hōhonu tonu
hoki – hā ki roto, hā ki
waho – he hau mō ō roro.

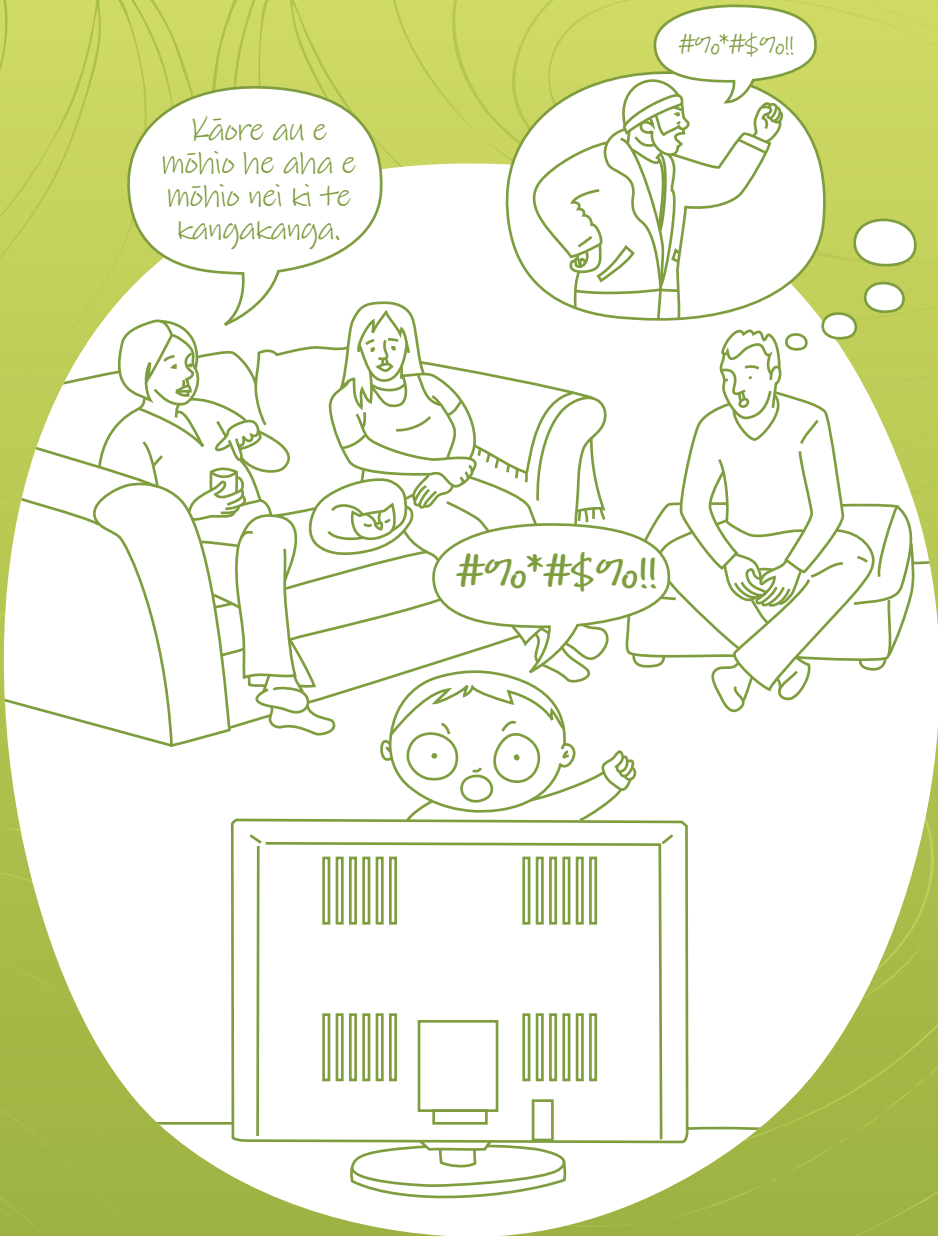
Kōrero me tō whānau, ō hoa, ngā
kaimahi hauora, whakapā rānei ki ā
Plunketline, 0800 933 922,
mēnā koe kāore tonu i te tau, e
awangawanga ana rānei

E huri ki ngā
rauemi kei
www.skip.org.nz
mō tō taputapu
whakapiri.



Copy Cat





Kāore au e
mōhio he aha e
mōhio nei ki te
kangakanga.

#0*#0!!

#0*#0!!

TE PĪHĪNGA
16 KI TE 18
MARAMA

Ko te manu kai i te miro,
nōna te ngahere.
Ko te manu kai i te mātauranga nōna te ao.

The bird that feeds on the miro berry has
the forest as its domain.
The bird that feeds on the tree of knowledge
commands the world.

E Aha Ana...

Tā Pēpi:

Mīharo katoa ahau i ngā mea ka tāea e taku arero. He pai ki au te mahi i ngā momo oro katoa.

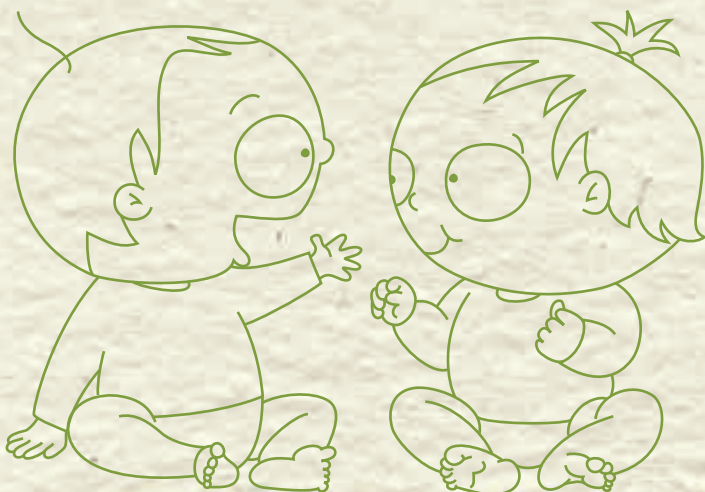
Kua tīmata au ki te whakakuene noa, ko au tērā e pōraru ana te hinengaro.

He pai ki a au māku anō e mahi aku mahi – pērā pea i ā Maui-tikitiki.

Kua pai ki ahau ētahi atu tamariki, ā, kua mōhio haere ahau me pēhea te mahi, te pārekareka i ō rātou taha.

Kua rahi ake aku kupu, ā, kua mōhio taku whānau i ngā mea pai ki au, i ngā mea kāore e pai ki au.

He pukapuka tāku e tino ngākau nui ana ahau, ā, he mōhio au, he kōrero hoki au i ngā pikitia.



Tā Pēpi:

He tino pai ki au te tākaro i taku ake kāinga,
noho haumarua ana au.

Kei te mōhio taku whānau mā te pārekareka,
mā te aroha nui, ka kaha kē atu te tipu ō aku
roro me taku wairua.

He tino rawe ki au aku
waiata, ngā waiata-ā-ringa
rawa nei.
Pūkana! Takahia!



Tā Te Whānau:

Kua kite mātou i ā pēpi e whakamātau ana i ētahi mahi, ka kore e tāea kua mahi kē.

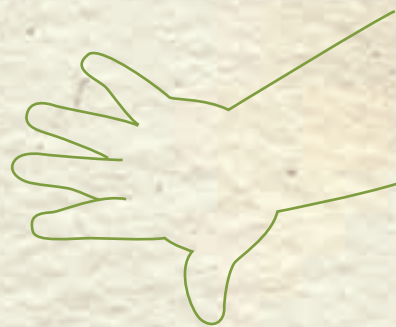
Kua noho mātou ki te pārekareka tahi ia rā.

Me mōhio mātou ki te waiho i ngā mea whakararuraru i ā mātou ki tahaki, kua e whai wāhi atu ki ā ia.

Kua kite mātou ahakoa kua rata ā pēpi ki ētahi atu tamariki, kāore anō ia kia mōhio ki te mahi tahi, ki te tākaro tahi, ki te kōrerorero ki ā rātou.

Kua tīmata mātou ki te whāngai kupu hou ki ā ia, arā, 'tohatoha'.

Kei te ako tonu ia ki te tohatoha, ki te tuku i ētahi mea ki ana hoa, kua ki ā ia anake. Ko tana pōhēhē ka hoatu noa ia ki ētahi, kāore e hoki mai ki ā ia!



Tā Te Whānau:

Kōrerorero tonu ai mātou ki ā ia mō te whāwhā aroha, kia pai te whāwhā ki ētahi. He kupu kaha rongoa ia - he mirimiri, awahi, kihi. Koinei rawa ngā kupu hei whakarata i tana wairua mēnā kei te patu, kei te rarapi, kei te pana, kia rongohia ai ana hiahia.

Kei te mōhio mātou ko mātou ana piringa, he aha ā mātou e mahi ana ka pērā anō ia, nō reira kei te kaha mātou ki te āta whāwhā, kei te āta kōrero, te whakaaro pai ki ā mātou anō, ki ētahi atu hoki.

He uaua te whakatau i ā mātou anō i ngā wā pōraruraru, pukuriri ā pēpi. I ētahi wā ko te rongoa, me wehe mātou i ā pēpi, haere ki wāhi kē mō te wā poto.

Ka whāngai tonu, ka whāngai tonu mātou i ā pēpi ki te kōrero, ki te kupu ia rā, te kōrero i te āhua o tētahi mea, te whakautu, te whakaae, te tāpiri me te mahi i ngā mahi hei whai māna. Whāngaia ki te reo, i te ao, i te pō, i ngā wā katoa.



Kaitiaki Pēpi

Ko 'Ngā mahi a Rēhia', ko ngā mahi parekareka.

E ai ki ngā kōrero o neherā i ahu mai te whakataukī nei 'Ngā-mahi-ā-Rēhia' mai i te tipuna nei ā Hine-raukatauri. Ko ia anō hoki te Atua o te taonga pūoro.

Kitea ai, rangona ai 'Ngā-mahi-ā-Rēhia' i ngā wā hauhake, ka huihui ana ngā whānau ki te āwhina i ā rātou anō. Hei reira kua taki waiata, haka, hākari, ka pārekareka, ka tākaro ngā mahi whakangahau ā te whānau.

Ko te haka te whakatinanatanga o te waiata, te oreore o te tinana, o te kanohi, te tū, te piu, te neke.

Tokorua ngā wāhine ā Tama-nui-te-rā, te Atua o te rā. Ko Hine-raumati te kōhine o te raumati, ā, ko Hine-takurua, te kōhine o te takurua, te makariri. He tama tā Rā rāua ko Hine-raumati, ko Tāne-rore. E ai ki ngā kōrero ko ia te Atua o te haka me ngā mahi toi, whakangahau.

Kaitiaki Pēpi

Ko te 'Kapa Haka', he roopu tēnei ka tū, ka waiata, ka poi, ka waiata-ā-ringa, ka haka hei whakangahau. He pai te kuhu ki tētahi kapa, ki te tautoko rānei i tētahi kapa, mō te whānau me pēpi anō hoki.

Kua waia ngā iwi o Aotearoa ki te kite i ngā haka i ngā wāhi mō te marea. Ka uru mai te wairua whakahī ki te hunga mātakitaki, ki te hunga hoki e tū ana, arā te whakahī ko wai rātou me ngā here ki te haka. Kitea mārikahia ana tēnei wairua ka haka ana te Kapa Ōpango i mua o te tīmatanga i te purei, te tū whakahī o ngā kaitākaro me te marea.

Akohia he haka me tō pēpi. Ka mīharo koe he aha ngā mea kua mōhio kē ā ia.

He pai noa iho te waiata, te whaiwhai ringa, te takahi, te whakamahi i te reo Māori me te whakarongo ki ētahi. Kāore he mahi i tua atu i tēnei ki te whakapakari i ana roro me tana tinana!



Te Hinengaro Miharo

Ka pai kē te whiriwhiri o ana roro i ngā mōhiotanga mēnā e haumarua ana ia, e tau ana te mauri.

Mā te kite o ngā kanohi o pēpi, ka rongo ai i o kōrero, ka mau pū i ā ia.

Ka ngēngē ana, ka matakua ana ā pēpi, ka pōrarua ana, ka kore ana ia e āta tau, kāore e koi te hinengaro.

E hiahia mōhio ana koe he aha ngā mahi a ngā roro mīharo o pēpi? E huri ki *Whakatipu* www.skip.org.nz

Waiata Kōhungahunga

Mā te pai ki ā o te mātakitaki, te whaiwhai i ngā mahi ā ētahi, he nui rawa atu āna e mōhio ana. Tauawhia tonuhia ēnei akoranga mā te hārihari tonu kia kitekite ai, kia rongo ai, ki tū ai ki te waiata-ā-ringa, ki te poi, ki te haka.

Ka mate! Ka mate! Ka ora! Ka ora!
Ka mate! Ka mate! Ka ora! Ka ora!
Tēnei te tangata pūhuru huru
Nāna nei i tiki mai
Whakawhiti te rā
Ā upane! Ka upane!
Ā upane ka upane, whiti te rā!
Hi!

Kia kaha, haka mai!

Ki te whakarongo ki tēnei haka, ka ako waiata anō, e huri ki *Whakatipu* www.skip.org.nz

Ngā Mahi a Pēpi

Tukuna kia tiroiro kia rāwekeweke ana ringaringa:

- Ngā taura, ngā āhua, te pā o ngā hanga rerekē ki te ringa, ngā momo āhua o te whakairo
- Ngā anga, ngā kōhatu (kia nui te āhua me te rahinga o ngā mea nei, kua e tuku i ngā mea moroiti) hei puru ki rō ipu, hei tango anō hoki

Te ngohe 'Pōhi' - he pai hei āwhina i ā pēpi ki te whakapakari i ngā whakanekeneke mai i te ringa ki te karu, te āta whakaaro me te whakatika raruraru. Tēnā mahia:

- Tīkina he ipu aihikirīmi kore he aha i roto me ētahi taputapu, ngā mea kāore e whara i ā pēpi, hei 'pōhi' ki rō ipu - kia maumahara, me āhua nui ake te rahinga, kei hiahia ā pēpi ki te puru i ngā mea ki roto i tōna waha i te tuatahi!

Me kūiti te putanga o taua ipu hei whakahihiko i ngā roro o pepi!

Ka pirangi ngohe anō koe, e huri ki *Whakatipu* www.skip.org.nz

Ngā Tohu Whānau

E ono ngā tohu hei whakapakari i ngā here mātua, whānau me ā rātou tamariki:

1. Te aroha me te mahana
2. Te kōrero me te whakarongo
3. Te ārahi me te māramatanga
4. Te tūāpapa mō te tika me te hē
5. Te mahi pono – ngā hua me ngā hapa
6. Te hanga ao tōtika, ao haumaruru



Ka pēhea te āhua o ngā Tohu Whānau i tēnei wāhanga o te ao o pēpi?

Te aroha me te mahana

- Kia maumahara kua hiahia ā pēpi ki te whai i āna e hiahia ana. Me tuku e tātou kia rua hiahia, hei whiriwhiri māna ko tēhea rawa hei whai māna
- Kia kaha tātou ki te awhiawhi, ki te aroha, ki te whai wā me tā tātou tamariki, ki te tākaro tahi, ki te kōrero tahi, ki te pānuī tahi, ki te waiata, ki te pārekareka
- Ki te kata i ngā mea e tika ana, i ngā wā e tika ana

Te kōrero me te whakarongo

- Kia mōhio tātou he mārama te tamaiti, he nui tonu ngā mea kei te tino mārama ia ahakoa kāore e puta i ā ia
- Tūturi! Kia āhei ai kōrua ko pēpi ki te kōrero 'kanohi ki te kanohi'. Kia iti, kia mārama te kōrero
- Waiata tahi, kōrero paki ki ā ia, ā, pānuī pukapuka ki ā ia, ia rā

Te ārahi me te māramatanga

- He hura noa iho te keka i tēnei wāhanga, kāore anō hoki i tāea e ia te whakaputa i ana tino hiahia, i ana tino whakaāro
- Kia mōhio hoki tātou kāore ā pēpi e aro atu ki ngā hiahia o ētahi. Hei aha anō māna!
- Ka kakama ia ki te kī 'Kao!' ahakoa arā kē tana hiahia ki te kōrero 'Āe!' Ko te mea nui ki ā ia ko te whakaputa i tana kupu kōrero

Te tūāpapa mō te tika me te hē

- Te whakarite tikanga kia iti nei mā te whānau, he tikanga e whakaae ana ngā pākeke katoa hei whai mātou
- Te noho mauri tau me te mau, ka mahi kino ana ā pēpi
- Te maumahara ka hari koe i ā pēpi ki te hokohoko, whāngaihia te tinana, te wairua, kia tau ai te mauri

Te mahi pono – ngā hua me ngā hapa

- Mena koe i kī 'kao' inanahi nei, koirā tonu te kōrero i tēnei rā
- Āta whakaārohia ngā mahi, kāore e tāea e tātou te āki, te totohe kia kai, kia moe ā pēpi i te wā e hiahia ana tātou
- Kia kaha tātou ki te mahi pai, ki te korero pai i ngā mahi e hiahia ana tātou kia kapohia mai e pēpi

Te hanga ao tōtika, ao haumarū

- Ko te mea nui mā tātou ko te whakatipu i te pēpi i runga i te aroha, te atawhai o tana whānau, mai i te tīmatanga, pakeke noa
- Te āta whakarite i ngā āhuatanga ki ā pēpi ia rā kia whai wā e tau ai tōna wairua, tōna tinana, he wā hoki hei whakaohooho, whakahihiko i ā ia
- Te tuku noa, kaua e pōnānā! Kei te ako ia, ā, ko tātou katoa ōna kaiako

Ki Te Haka!

Haramai...
haramai!

Kia kaha pūkana,
ka mate, ka mate...
Rite tonu koe
i tō mātua Kēkē
ki te haka!







Papakupu

Kupu

Whakamārama

Aituā

To have an accident

Pōhi

Post

Kini

Pinch

Kōhuri

Sapling

Kuhukuhu

Enter

Mauru

Peace, harmony

Nihoniho

Teething

Ngōki

Crawl

Mihini Ngote Paru

Vacuum

Kupu

Whakamārama

Moroiti

Very small

Mōrearea

Dangerous

Paihere

Connect

Rāoa

Choke

Rētōtanga

Depths

Tāruarua

Copy, imitate

Whara

Injure, harm

Whaiwhai

Copycat

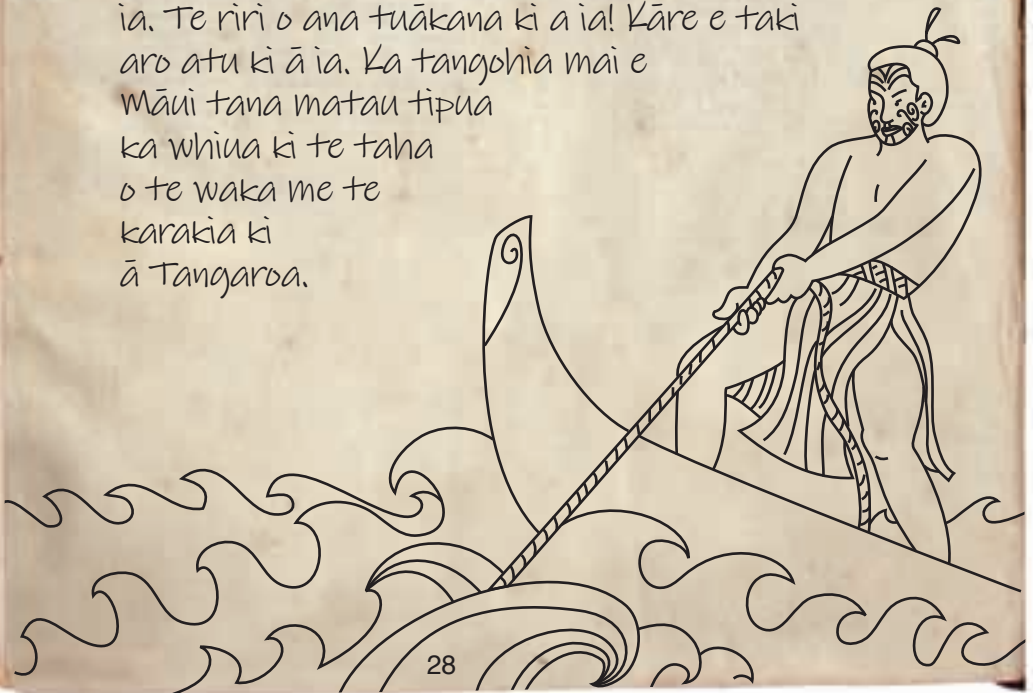
Pakiwaitara



Te Ika ā Māui

Kātahi ka puta te hiahia ki ā Māui ki te haere ki te hī ika ēngari kāore ana tuākana e tuku i ā ia kia whai atu i ā rātau ia ata, ia ata. I tētahi rangi ka whakaāro ā Māui me huna ia i ā ia anō i te waka o ana tuākana, kia tae ai ia ki te hī.

Nā ka mahia hunahia e ia he matau mai i te kauae tapu o tana tipuna, ā, i tētahi pō ka piki ā ia ki runga i te waka o ana tuākana ka huna.

Kia tae ra anō rātau ko ana tuākana ki waho i te moana kātahi anō ā Māui ka whakaatu i ā ia. Te riri o ana tuākana ki a ia! Kāre e taki aro atu ki ā ia. Ka tangohia mai e Māui tana matau tipua ka whiua ki te taha o te waka me te karakia ki ā Tangaroa.






Ka heke te mātau ki raro, ki raro, ki te
rētōtanga o te moana, ā, ka rongō ā Māui kua
mau tana matau ki tētahi mea. Ka āta kumea
e ia, ā, kātahi ka mau te matau ra. Ka noho
rātau ko ana tuākana ki te kukume i tā rātau
ika nunui ki rāhaki.

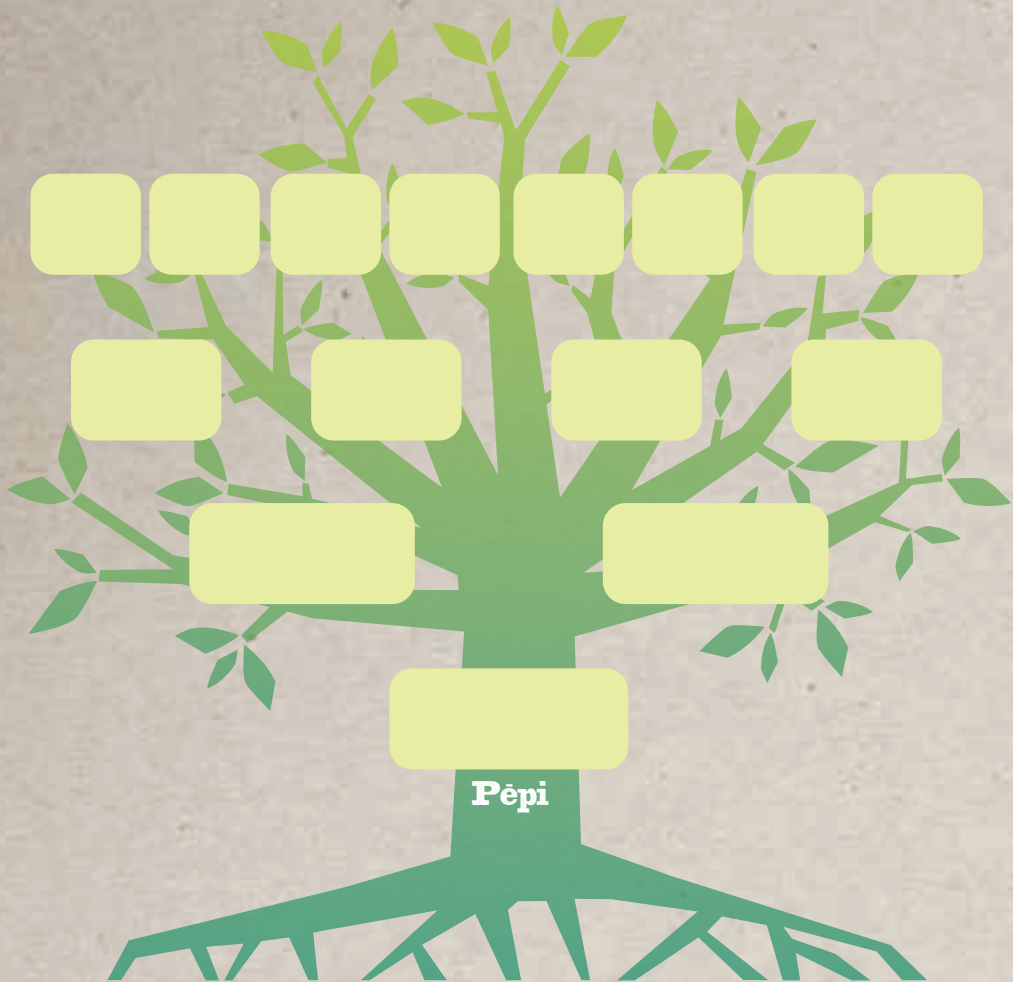
Ka whakatūpato ā Māui ki ana tuākana, kia
tatarī kia kōrero a ia ki ā Tangaroa i mua i tō
rātau tapahitanga i te ika. He aha te aha! Ko
tō rātau kāikā ka tīmata ki te tapatapahi i te
ika mā rātau anō. Hoki rawa mai ā Māui, kua
tūreiti kē.

Ko te ika nei ko Te-Ika-a-Māui, ā, ko ngā
wāhanga i tapatapahia e ngā tuākana o Maui
ko ngā kōawa, ngā maunga me ngā roto.

Pānuihia tēnei pūrākau i roto i te reo Pākehā me ētahi atu
whakamōhiotanga, e huri ki *Whakatipu* at www.skip.org.nz

- 
- E āhei ana te tamaiti kia whai wāhi
ki ngā mahi
 - Ngā tautohetohe i waenga i ngā
tuākana me ngā teina
 - Whakawhetai atu ki te hunga
whakawhiwhi

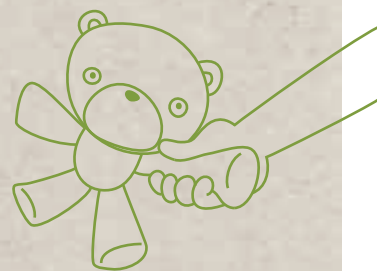
Whakapapa



Pēpi

Ko Wai Au?

Ōku whakaaro



Ōku whakaaro





He rauemi tēnei hei tautoko whānau ki te whakatipu tamariki. Kei roto i ā *Whakatipu* ngā kōrero mōhiotanga, ngā ngohe, ngā akoranga, ā tikanga mā ngā mātua katoa. E whā ngā pukapuka o *Whakatipu*, e titiro ana i te tipu o te tamaiti mai i te wā i hapū ai tana māmā tae noa ki te wā kua rima tau te tamaiti.

TE KĀKANO

Mai ka tō te kākano, whānau noa.

Pukapuka 1: Te Hapūtanga

He wā tēnei me āta rāpoipoi te māmā me tana kōhungahunga kei tōna whare tangata tonu. He wā hei noho tahi, moemoēā, kōrero tahi, whakarongo.

TE PIHINGA

Mai ka whānau mai ki te 18 marama.

Pukapuka 1: Mai ka whānau mai ki te 6 marama

Pukapuka 2: 7 marama ki te 12 marama

Pukapuka 3: 13 marama ki te 18 marama

He wā tēnei mō te pēpi kia āta manaakihia e tētahi i ngā wā katoa hei whāngai, hei tiaki, hei rāpoipoi kia noho haumaruru tonu.

TE KŌHURI

Mai i te 19 marama ki te 3 tau.

Pukapuka 1: 19 marama ki te 24 marama

Pukapuka 2: 25 marama ki te 30 marama

Pukapuka 3: 31 marama ki te 36 marama

He wā tēnei mō te tamaiti kia tauawhihia, kia tautokohia kia tū pakari ai. He wā anō hoki kia tāwharauhia ia kia noho haumaruru tonu.

TE MĀHURI

Mai i te 3 tau ki te 5 tau.

Pukapuka 1: Toru tau ki te whā tau

Pukapuka 2: Whā tau ki te rima tau

He wā tēnei kua kaha te puta o te tamariki ki ngā whakanekeneke o te wā.

